



DINESH
IRON WORKS



DINESH IRON WORKS

Company Profile



Table of Contents

I About Organization	3
II Our Milestone	5
III About Directors	6
IV Industry Background	7
V Our Products	8
VI Our Clients	14
VI Contact Details	15



About Us

We, DINESH IRON WORKS is one of the leading manufacturers of precision components required by various industries & projects.

We have the experience of more than twenty years in machining and fabrication, as well as skilled manufacturing personnel who brings design to us as required.

Dinesh Iron Works , has gained extensive experience in OIL and GAS EXPLORATION sector, and currently serving to top level companies in Gujarat.

Quality is the cornerstone of our operations. We are committed to delivering products that surpass industry standards, ensuring durability, performance, and safety. Our dedication to continuous improvement and innovation enables us to stay at the forefront of the mechanical manufacturing landscape.

With vast experience and depth understanding the industries, we attain a reputable position which make us to be more responsible, dedicated towards further business.

OUR MISSION

At Dinesh Iron Works, our mission since 1976 has been to lead the manufacturing industry, catering to diverse sectors ranging from oil & gas to energy industries. Our commitment to innovation, efficiency, and client satisfaction propels us to constantly evolve and meet the changing needs of our customers. We strive to contribute positively to the growth and success of the industries we serve.

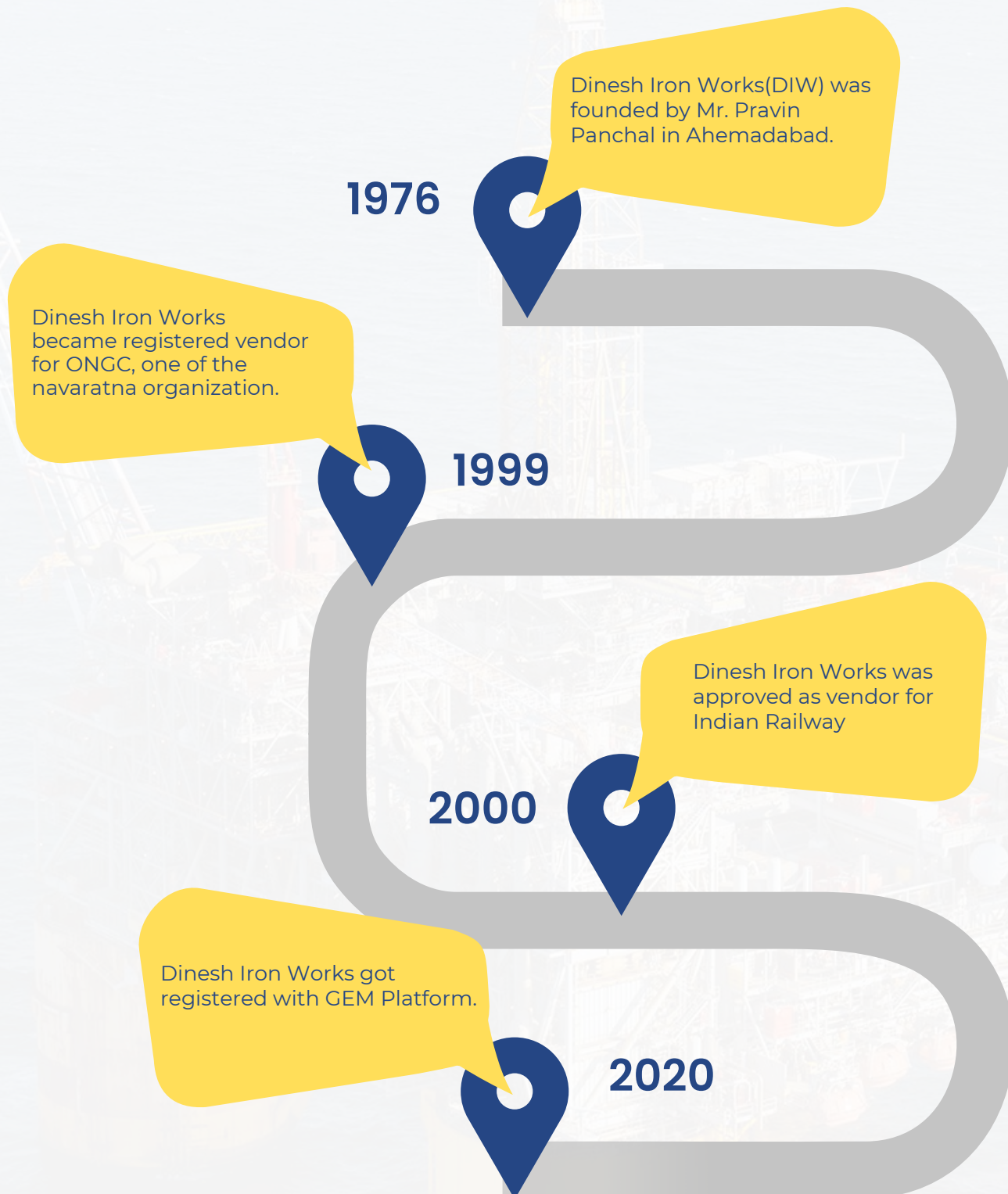
As we look to the future, Dinesh Iron Works envisions becoming a global leader in manufacturing, recognized for our unwavering commitment to quality and innovation. We aspire to be the preferred choice for industries seeking cutting-edge solutions, setting new benchmarks for excellence in every aspect of our operations. Our vision is to create a sustainable and impactful legacy, driving positive change in the manufacturing landscape.

OUR VISION



Dinesh Iron Works

Milestone



PEOPLE STEERING THE VENTURE



Mr. Pravin R Panchal

Director

With over 30 years of experience in the manufacturing industry of oil and gas, Mr. Pravin Panchal has established himself as a trusted expert in providing tailored solutions to the ever-evolving needs of this dynamic sector. His extensive knowledge and expertise have been honed through years of hands-on experience, making him a valuable asset for any company operating within the oil and gas industry. Whether it is exploration or production, Pravin's expertise encompasses all aspects of the oil and gas industry. Additionally, Pravin possesses a unique proficiency in diesel loco parts for Western Railway. This specialized knowledge further sets him apart from his peers, enabling him to offer comprehensive solutions that cater specifically to the needs of railway industries.



Mr. Mihir P Panchal

Managing director

At the helm of our organization is Mr. Mihir Panchal, a dynamic and visionary leader who serves as our esteemed Managing Director. With a solid educational background in Mechanical Engineering and Supply Chain Management, Mr. Panchal brings a wealth of knowledge and expertise to our company. His extensive experience in these fields has contributed significantly to our success and growth over the years. Driven by his passion for innovation, Mr. Panchal continuously explores new technologies and industry trends to ensure that Dinesh Iron Works stays at the forefront of advancements in mechanical engineering and supply chain management practices.

INDUSTRIES WE SERVE



- **Textile**
- **Cement**
- **Chemical**



- **Oil & Gas**
- **Energy**
- **Railways**



Our Products

Fasteners



Mechanical Products



Railway Products



Pump Spares



Drilling Rig Spares



Our Products

Fasteners



Mechanical Products



Railway Products




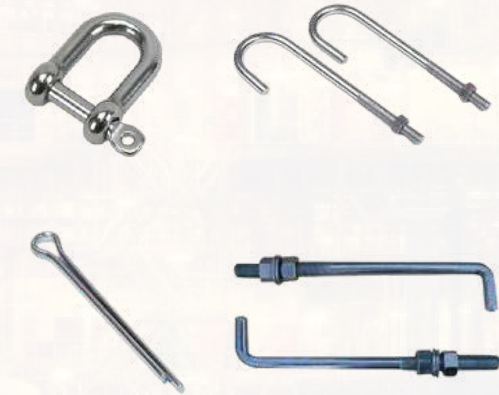
Pump Spares



Drilling Rig Spares




FASTENERS

- 
- 
- Bolts
 - Studs
 - Springs
 - Connections
 - Pins
 - Shafts
 - Nut
 - Adaptor
 - Bushes
 - U-clamps
 - Pipe clamps 3/8 to 2" c (as per drawing)
 - Sleeves
 - Wire rope clamp 6mm to 36mm
 - Wire rope sling
 - D-shackles 2 ton upto 50 ton
 - Turn buckle
 - Any types of fasteners and consumable items
 - Foundation bolts(L-type/J-type/T-type/hook type)etc.
In ms and en-8 material
 - Break band shoe screw with nut/washer brass

All the above items are available in alloy steel material.

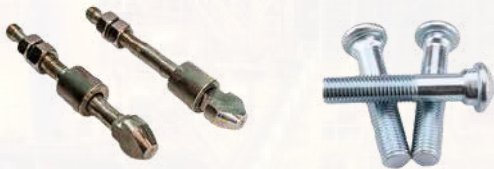
Standard's available with us :

- 
- Stud/bolt/nut standards : ASTM-A 193 GR B7/ AISI 4140
 - Other standards : IS 1364/1367/1875 and is railway standards
 - For nuts : ASTM-A 194 GR 2H
 - SS material : SS 304, SS 316, SS 202
 - Brass, copper, mild steel and gunmetal
 - E.N Series : EN 8/9 UPTO 31

MECHANICAL SECTION



- Dresser Coupling Nut Bolt
- Ferrule Aluminium
- D-Shackle
- Wire Rope Clamp
- Valve Spindle
- Ss Strainer
- All Types Of Flanges As Per Is Standard And 150 Class
- All Types Of Bend As Per Sc 40 Classs
- All Types Of Tees As Per Sc 40 Classs
- Power Tong Die
- All Types Of Studs Bolts As Per Astm Standard
- All Types Of Rubberized Items (O Rings And Others As Per Drg)
- Totco Tools
- Mast Pin En 19
- Lock Pin For Mast Pin (3mm To 6mm) – Material Spring Steel
- All Types Of Thimbles
- Mud Pump Studs
- Studs And Nuts
- Shale Shaker Nut Bolt – Material Ss
- Shale Shaker Springs
- Wash Pipe
- Puller
- Valve Seat/Valve Body/Valve Insert/Valve Spring
- Brass Screw For Break Band Shoe
- Liner
- Piston Cup/Piston Rod/Valve Guide Assembly/Extension Rod



RAILWAY INDUSTRIES



- Pipe Bracket Clamps 3/8 To 2"C (As Per Drawing)
- Brass Tee
- Brass Connector/Connections
- Brass Adaptor
- Ferrule
- All Types Of Studs/Bolts/Nuts/Washers
- Springs
- All Types Of Gear Case Bolts/Foundation Bolts
- All Types Of Pins (Hanger Pin, Falcon Pin, Lock Pin, Pivot Pin, Eccentric Pin, Spring Retainer Pin)
- Gear Case Cap
- All Types Of Split Pins, Quarter Pins – Made From Sheet/Plate
- Locking Plate
- Tvs/Lps/Caparo/Unbrako Bolt And Nut



PUMP SPARES

- Valve Complete Assembly
- Valve Sheet
- Valve Spring
- Valve Insert
- Piston Rod
- Plunger
- Extension Rod
- Stuffing Box With Nut
- Stuffing Box Stud
- Gland Follower Brass
- Gland Bush Brass
- Lantern Ring Brass
- All Types Of High Tensile Studs With Nut
- All Types Of Spring
- Coupling Bolts With Nut
- Break Band Shoe Screw With Nut/Washer Brass
- Impeller Shaft
- Impeller
- Piston Cups
- Copper Gaskets For Gas Compressor

All products available for

- Goma Pump
- Bpcl Pump
- Voltas Pump
- Russian Pump
- Water Injection Pump



DRILLING RIG SPARES



- Tubing Tong Complete And Spares
- Valve Assembly For Tee Model/3pp 300
- Valve Seat
- Plunger
- Piston Rod
- Extension Rod
- Studs/Bolts/Nuts As Per Astm Standards
- All Types Of Dies (Slip Dies, Pneumatic Dies, Varco Dies) – Material As Per 353/En 36
- Break Band Shoe Screw $\frac{1}{4}$ X 1-1/4 With Nut And Washer
- All Types Of Fasteners

ARTIFICIAL LIFT SECTION

- Sucker Rod Coupling
- Reducer
- Pulley
- Steam Valve
- Foundation Bolts
- Studs/Bolts/Nuts
- All Types Of Shafts As Per Drawing Or Sample



OUR CLIENTS

At DIW, we value the trust our clients place in us and are committed to exceeding their expectations. Our goal is to build enduring partnerships, standing by our clients through every stage of their journey, offering continuous support and adapting to their evolving needs.



पश्चिम रेलवे
Western Railway



AAKASH OIL FIELD
SERVICES PVT. LTD.



DEEP
Industries
Limited



SELAN
EXPLORATION
TECHNOLOGY LIMITED

JOHN Energy Ltd.

JTI 

 **GOMA**





DINESH
IRON WORKS



Contact us

Registered Office



+91-9879572782 | +91-7874848806



diw_1976@yahoo.co.in



#24, Amrut Industrial Estate,
Dudheshwar Road, Ahemadabad-04